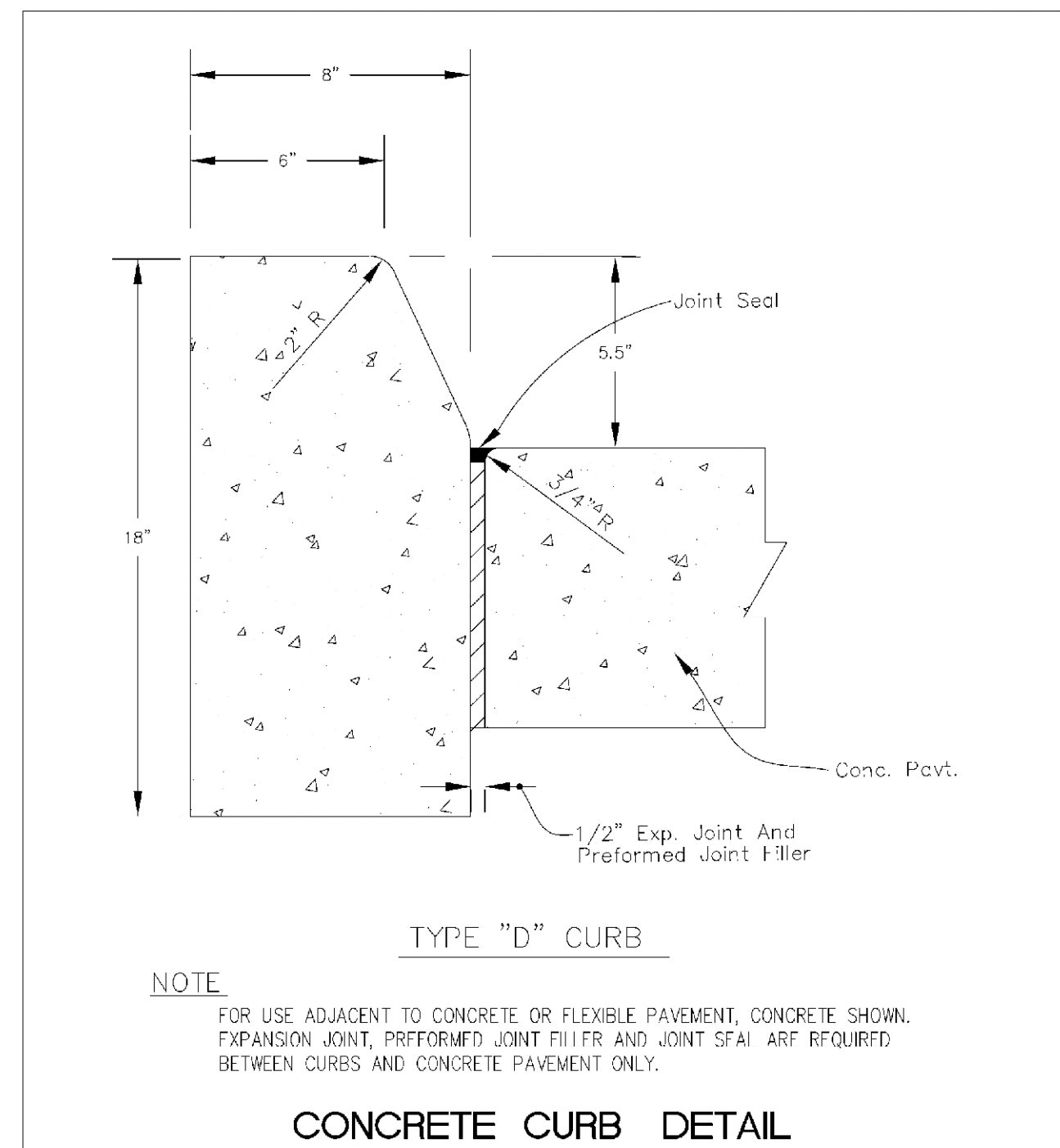
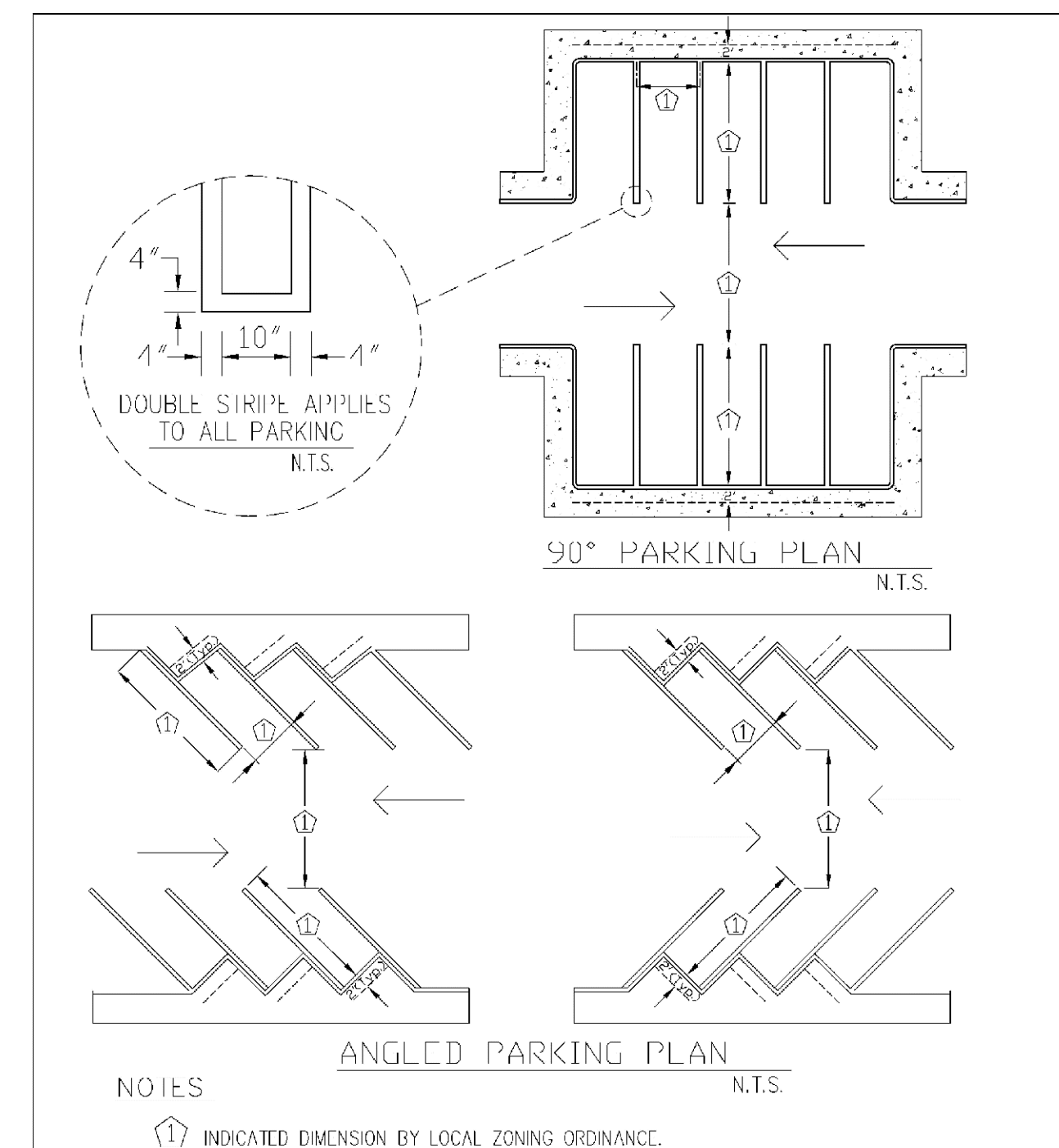


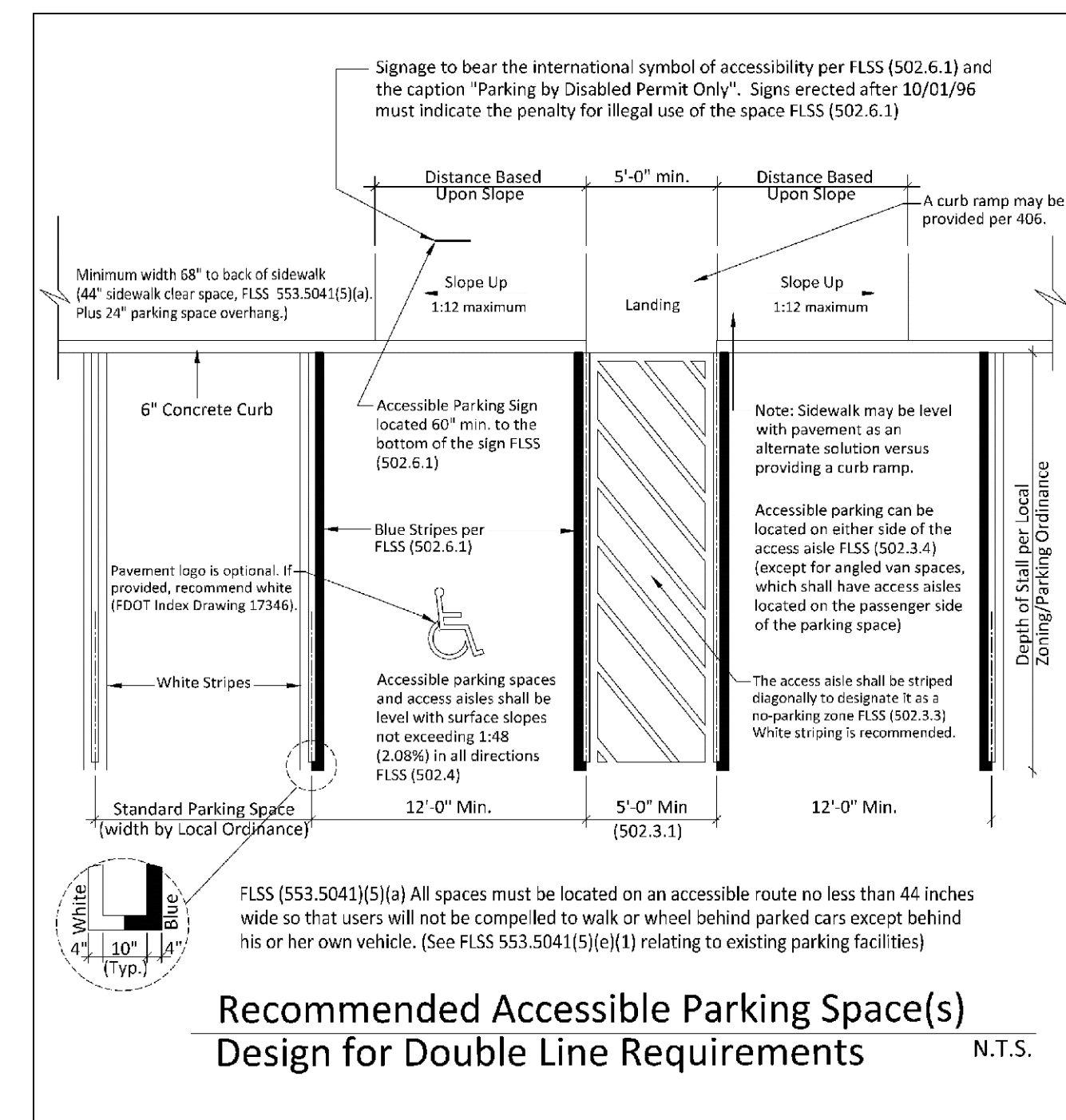
ENGINEERING STANDARDS 2022			
REVISIONS		ENGINEERING DIVISION	CONCRETE CURB AND GUTTER
BY	DATE		
S.S.	07-2016	CITY OF POMPAÑO BEACH	
		SCALE: N.T.S.	DATE: MAY 2022 DWG. NO. <b>300-1</b>



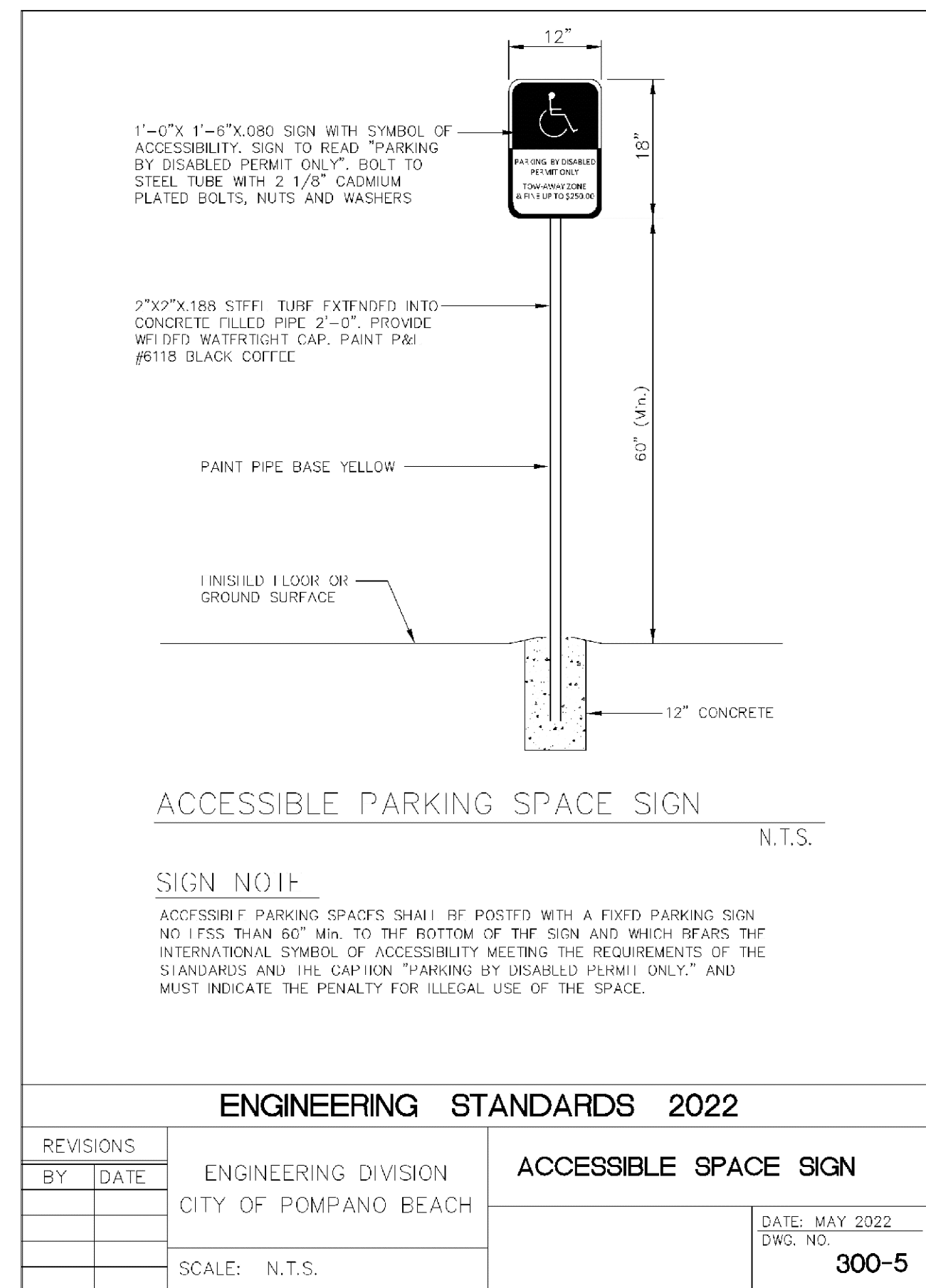
ENGINEERING STANDARDS 2022			
REVISIONS		ENGINEERING DIVISION	CONCRETE CURB
BY	DATE		
S.S.	01-2014	CITY OF POMPAÑO BEACH	
S.S.	08-2015		
S.S.	07-2016		
		SCALE: N.T.S.	DATE: MAY 2022 DWG. NO. <b>300-2</b>



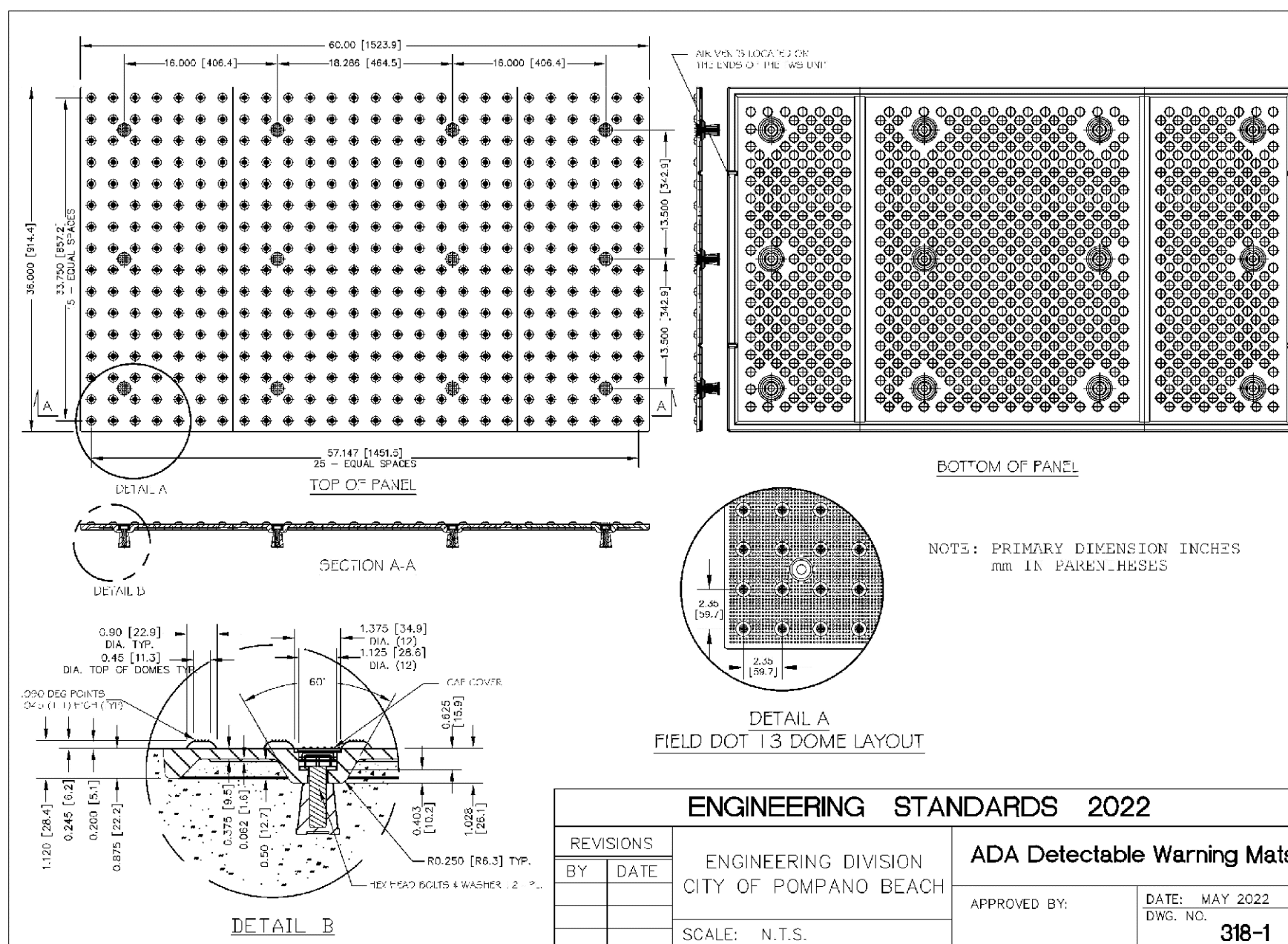
ENGINEERING STANDARDS 2022			
REVISIONS		ENGINEERING DIVISION	STANDARD PARKING SPACES
BY	DATE		
		CITY OF POMPAÑO BEACH	
		SCALE: N.T.S.	DATE: MAY 2022 DWG. NO. <b>300-3</b>



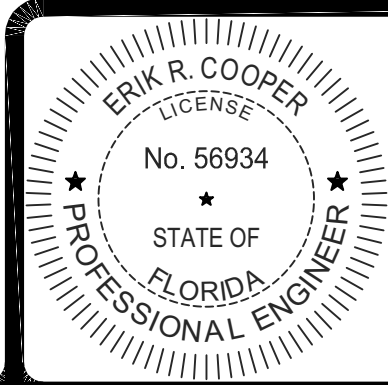
ENGINEERING STANDARDS 2022			
REVISIONS		ENGINEERING DIVISION	ACCESSIBLE PARKING SPACES
BY	DATE		
		CITY OF POMPAÑO BEACH	
		SCALE: N.T.S.	DATE: MAY 2022 DWG. NO. <b>300-4</b>



ENGINEERING STANDARDS 2022			
REVISIONS		ENGINEERING DIVISION	ACCESSIBLE SPACE SIGN
BY	DATE		
		CITY OF POMPAÑO BEACH	
		SCALE: N.T.S.	DATE: MAY 2022 DWG. NO. <b>300-5</b>



ENGINEERING STANDARDS 2022			
REVISIONS		ENGINEERING DIVISION	ADA Detectable Warning Mats
BY	DATE		
		CITY OF POMPAÑO BEACH	
		SCALE: N.T.S.	DATE: MAY 2022 DWG. NO. <b>318-1</b>



THIS ITEM HAS BEEN DIGITALLY  
SIGNED AND SEALED BY  
ERIK R. COOPER, P.E. ON  
4/12/2024.

PRINTED COPIES OF THIS  
DOCUMENT ARE NOT  
CONSIDERED SIGNED AND  
SEALED AND THE SIGNATURE  
MUST BE VERIFIED ON ANY  
ELECTRONIC COPIES.



2001 N. ANDREWS AVE

CHENEY BROTHERS POMPAÑO BEACH  
SECTION 27, TOWNSHIP 48S., RANGE 42E.  
CITY OF POMPAÑO BEACH, FLORIDA  
CONCEPTUAL PAVING AND  
DRAINAGE DETAILS

REVISIONS

DESIGN	DRAWN	CHECKED	APPROVED	DATE
E.C.	B.L.			

JOB NO.	DRAWING NO.	SHEET	OF
22-187	22187C06	6	15